



# Pneumatic Valves & Accessories

## Manually-Operated Directional Valves

### 3-Way & 4-Way Manually Operated Pneumatic Valves Aro® E Series • 26 SCFM



Hand Lever



Palm Button



Pedal

**Features:** Low profile.

**Application:** Moderate flow applications requiring manual valve operation.

**Actuators:** Hand Lever, Palm Button, Pedal, Treadle, Manual Bleed.

**Materials:** Extruded aluminum body. Buna-N spool seals.

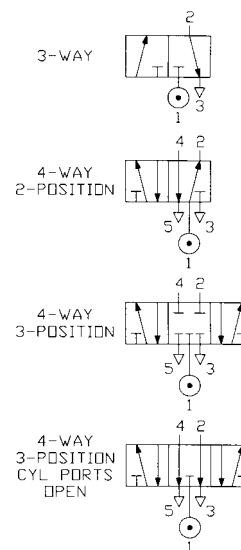
**Flow Rating:** Based on 100 PSIG input and 85 PSIG output.

**Operating Pressure Range:** 20-150 PSI.

**Operating Temperature Range:** -10°F to 180°F.

**Lubrication:** Valves use O-ring seals. For maximum performance and life expectancy, standard air line lubrication should be used.

**Dimensions:** page 801



### 3-Way & 4-Way Manually Operated Pneumatic Valves • Aro® E Series • 26 SCFM

Catalog Part No.	Aro® Model	Actuator Type	Valve Type	Spool Action	Ports	Flow Rating	CV Rating	Wt.	Price Each
•C1CN80	E212LM	Hand Lever	4-way 2-position	Manual Return	1/4 NPT (Side)	26 SCFM	0.70	0.92	
•C1CN79	E212FS	Pedal	4-way 2-position	Spring Return	1/4 NPT (Side)	26 SCFM	0.70	1.72	
C1CN85	E712LS	Hand Lever	4-way 3-position (Cylinder ports open in center)	Spring Centered	1/4 NPT (Side)	26 SCFM	0.70	1.16	
•C1CN84	E312LS	Hand Lever	4-way 3-position	Spring Centered	1/4 NPT (Side)	26 SCFM	0.70	1.17	

Hydraulic Power & Control

Pneumatic Power & Control

Fluid Conveying

Miscellaneous Products

Indexes & Technical Information



This page is part of a complete catalog which contains technical and safety data that must be reviewed when selecting a product