

Vane Pump Build Program

Quick ship program for fixed displacement vane pumps

The Build Shop stocks individual components that allow us to build vane pumps and ship in a couple days from West Palm Beach. All pumps are available in both Clockwise and Counter-clockwise rotations. Pumps built with genuine Vickers parts. All pumps tested for flow and pressure.

V10 Single Pumps

V20 Single Pumps



Displacements	Mount	Ports	Shafts
3.3 cm ³ (0.20 in ³)	SAE A	Pipe	3/4" Keyed
6.6 cm ³ (0.40 in ³)	SAE B	SAE	9T Splined
9.8 cm ³ (0.60 in ³)			11T Splined
13.1 cm ³ (0.80 in ³)			
16.4 cm ³ (1.00 in ³)			
19.5 cm ³ (1.19 in ³)			
22.8 cm ³ (1.39 in ³)			

Displacements	Mount	Ports	Shafts
19.5 cm ³ (1.19 in ³)	SAE A	Pipe	3/4" Keyed
22.8 cm ³ (1.39 in ³)	SAE B	SAE	9T Splined
26.5 cm ³ (1.62 in ³)			11T Splined
29.7 cm ³ (1.81 in ³)			7/8"-13T
36.4 cm ³ (2.22 in ³)			9T Short
39.0 cm ³ (2.38 in ³)			
42.4 cm ³ (2.59 in ³)			

V2010 and V2020 Double Pumps

Double pumps with a V20 displacement for the front section, and a V10 or V20 displacement for the rear section.



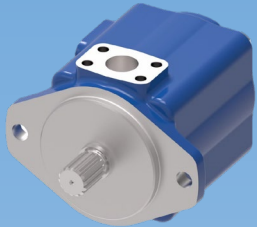
V10F and V20F Pumps

V10 and V20 pumps with a flow control and fixed relief valve built into the rear cover.



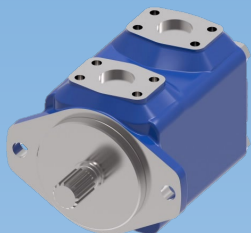
25VQ, 35VQ, 45VQ Pumps

Larger displacement vane pumps from 40.2 cm³ (2.45 in³) to 193.4 cm³ (11.80 in³)



25M, 35M, 45M, 50M Vane Motors

Some vane motor displacements are available.



Contact HSC Technical Support at tech@hydraulic-supply.com or (561) 570-3190 for details and quotes.